

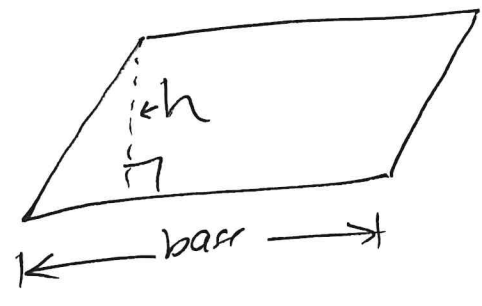
1/19/2022

M3 Lesson 4

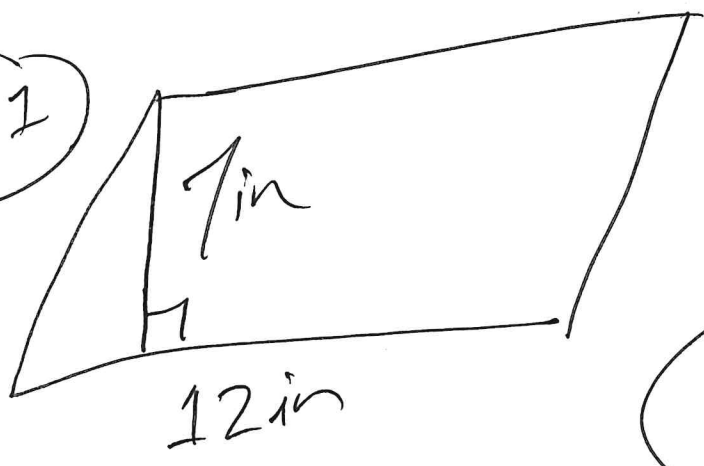
Area of figures

Parallelogram:

$$A = b \cdot h$$



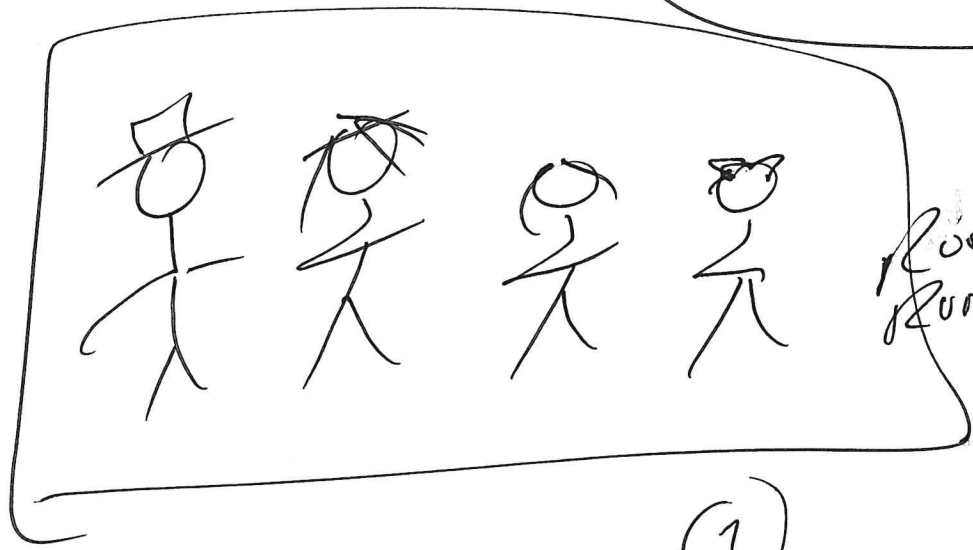
ie 1



$$A = b \cdot h$$

$$A = 12 \cdot 7$$

$$A = 84 \text{ in}^2$$

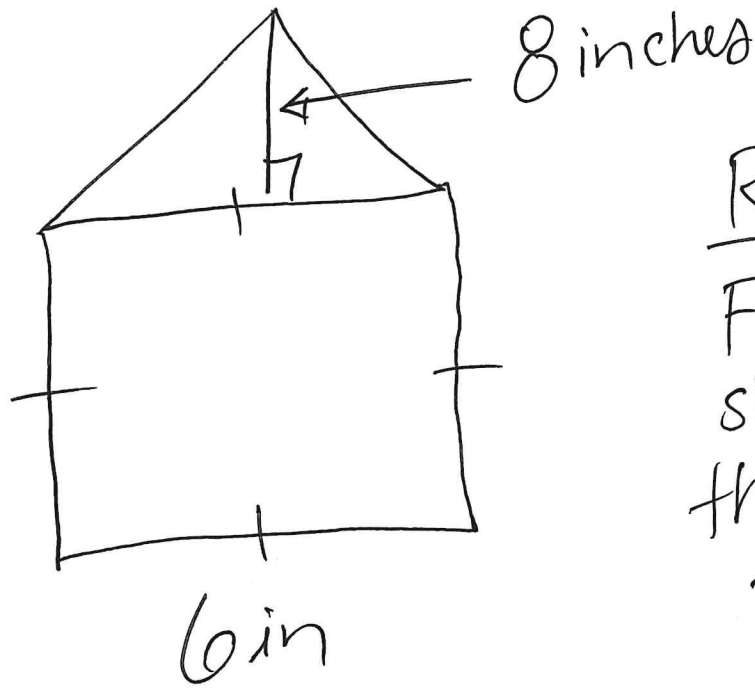


first  
fourth

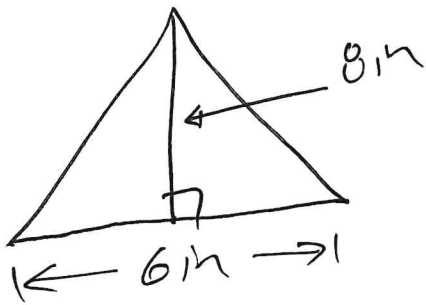
(1)

# Area of Irregular Figure: →

ie1



Rule:  
Find each shapes area then add together.

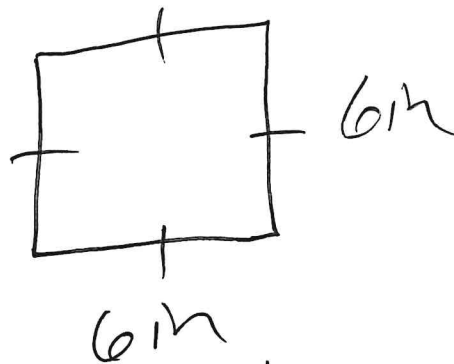


$$A = \frac{b \cdot h}{2}$$

$$A = \frac{6 \cdot 8}{2}$$

$$A = \frac{48}{2}$$

$$A = 24 \text{ in}^2$$



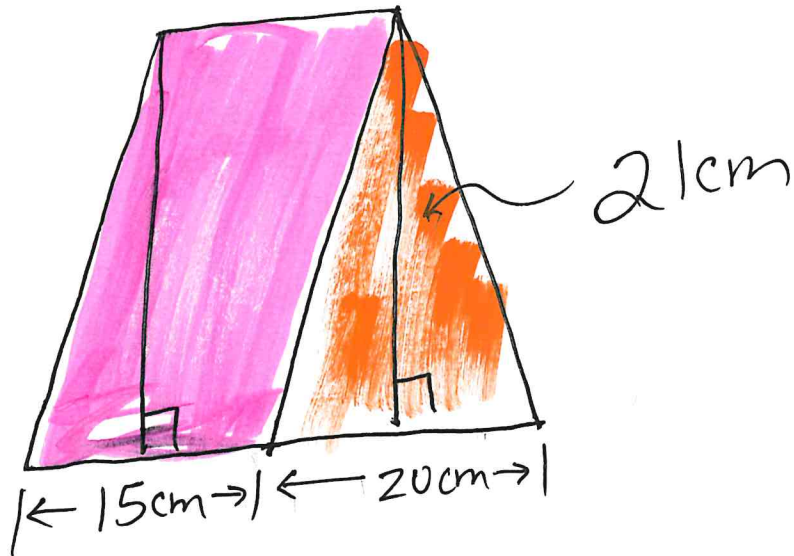
$$A = b \cdot h$$

$$A = 6 \cdot 6$$

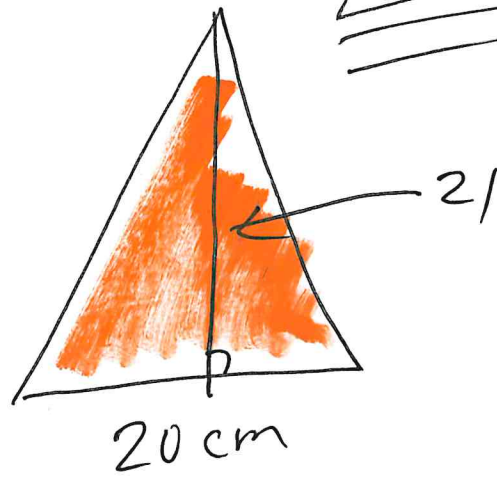
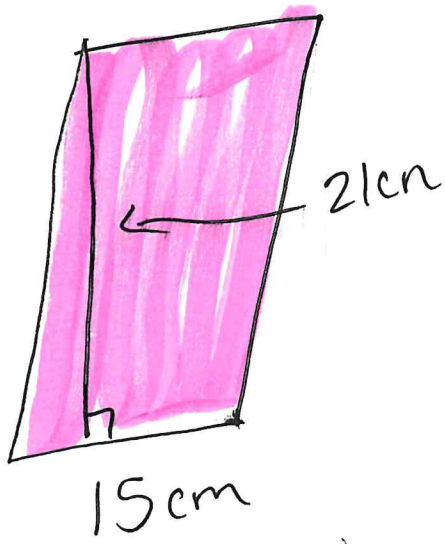
$$A = 36 \text{ in}^2$$

24
36
<hr/>
60 in <sup>2</sup>
<u>total</u>

ie 2



$$\begin{array}{r} 315 \\ 210 \\ \hline 525 \text{ cm}^2 \\ \text{total} \end{array}$$



$$A = b \cdot h$$

$$A = 15 \cdot 21$$

$$A = 315 \text{ cm}^2$$

$$A = \frac{b \cdot h}{2}$$

$$A = \frac{20 \cdot 21}{2}$$

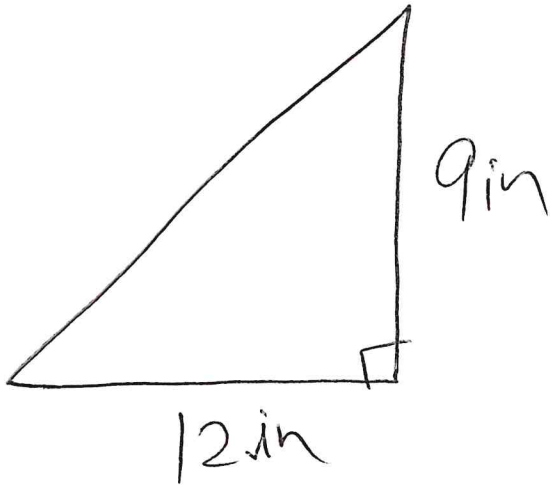
$$A = \frac{420}{2}$$

$$A = 210 \text{ cm}^2$$

M3 Lesson 4/~~3~~  
Pgs. 31-32 #1-4

Find  
the Area  
of each

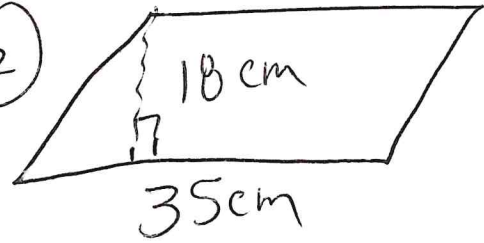
(1)



A =

---

(2)

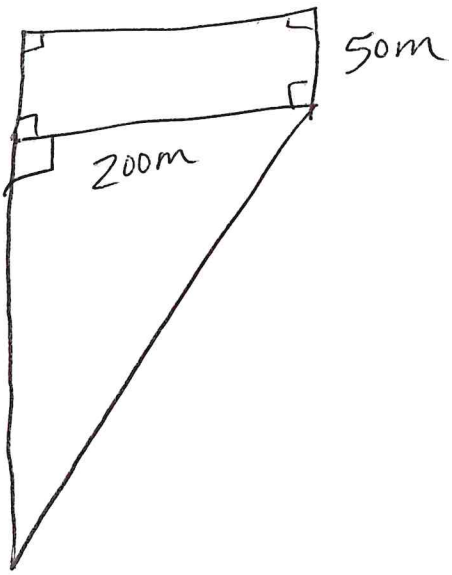


A =

---

3.)

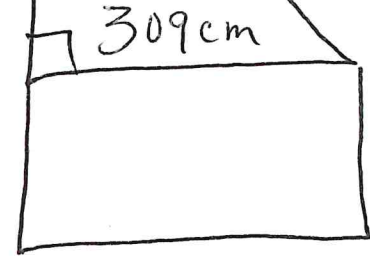
~~600m~~



Hint: 2 shapes

4.)

511cm



70cm

Hint 2 shapes